



Government of India
Ministry of Earth Sciences



India Meteorological Department

PRESS RELEASE-4

Time of issue: 1200 hours IST

Dated: 27th November, 2024

Sub: Deep Depression over Southwest Bay of Bengal

Yesterday's **Deep Depression** over Southwest Bay of Bengal moved north-northwestwards and lay centred at 0830 hours IST of today, the 27th November 2024 over the same region near latitude 8.5°N and longitude 82.3°E, about 120 km east-southeast of Trincomalee, 370 km southeast of Nagappattinam, 470 km southeast of Puducherry and 550 km south-southeast of Chennai.

It is very likely to continue to move north-northwestwards and intensify further into a cyclonic storm during next 12 hours. Thereafter, it will continue to move north-northwestwards towards Tamil Nadu coast skirting Sri Lanka coast during subsequent 2 days.

The system is being tracked by DWR Karaikal. A continuous watch is being maintained for the movement and intensification of system.

Forecast track and intensity are given in the following table:

Date/ Time (IST)	Position (Lat. °N/ long. °E)	Maximum sustained surface wind speed (Kmph)	Category of cyclonic disturbance
27.11.24/0830	8.5/82.3	55-65 gusting to 75	Deep Depression
27.11.24/1130	8.8/82.2	55-65 gusting to 75	Deep Depression
27.11.24/1730	9.1/82.1	60-70 gusting to 80	Cyclonic Storm
27.11.24/2330	9.5/82.0	60-70 gusting to 80	Cyclonic Storm
28.11.24/0530	10.0/81.9	65-75 gusting to 85	Cyclonic Storm
28.11.24/1730	10.6/81.9	65-75 gusting to 85	Cyclonic Storm
29.11.24/0530	11.3/81.8	65-75 gusting to 85	Cyclonic Storm
29.11.24/1730	12.0/81.5	60-70 gusting to 80	Cyclonic Storm
30.11.24/0530	12.6/80.8	55-65 gusting to 75	Deep Depression

Warnings:

(i) Rainfall Warning:

Tamil Nadu & Puducherry: Heavy to very heavy rainfall at a few places with **extremely heavy rainfall** at isolated places over Tamil Nadu & Puducherry on 27th and heavy to very heavy rainfall at isolated places is likely during 28th to 30th November.

Coastal Andhra Pradesh: Light to moderate rainfall at many places with heavy rainfall at isolated places is likely on 27th November and heavy to very heavy rainfall during 28th to 30th November.

Contact: Cyclone Warning Division, Office of the Director General of Meteorology, India Meteorological Department, Ministry of Earth Sciences, E-mail: cyclonewarningdivision@gmail.com, Website: rsmcnewdelhi.imd.gov.in, Spatial rainfall distribution: Isolated: <25%, A few: 26-50%, Many: 51-75%, Most: 76-100%, Rainfall amount (mm): Heavy rain: 64.5 – 115.5, Very heavy rain: 115.6 – 204.4, Extremely heavy rain: 204.5 or more.

Rayalaseema: Light to moderate rainfall at many places with heavy rainfall at isolated places is likely during 28th to 30th November.

Kerala: Light to moderate rainfall at many places with heavy rainfall at isolated places is likely on 30th November.

(ii) Wind warning:

- Squally wind speed reaching 55-65 kmph gusting to 75 kmph is likely to prevail over southwest Bay of Bengal and along & off Sri Lanka coast till 27th morning. It is likely to increase becoming Gale wind speed reaching 60-70 kmph gusting to 80 kmph over southwest Bay of Bengal and along & off Sri Lanka coasts from evening of 27th November. Thereafter, Gale wind speed reaching 65-75 kmph gusting to 85 kmph is likely to prevail over southwest Bay of Bengal till morning and decrease marginally becoming 60-70 kmph gusting to 80 kmph till night of 29th November, thereafter squally winds speed reaching 55-65 kmph gusting to 75 kmph by morning of 30th November.
- Squally wind speed reaching 45-55 kmph gusting to 65 kmph is likely to prevail over adjoining areas of westcentral Bay of Bengal till 27th morning. It would increase gradually becoming 55-65 kmph gusting to 75 kmph over the same region till 29th November evening.
- Squally wind speed reaching 45-55 kmph gusting to 65 kmph is likely to prevail along & off Tamil Nadu- Puducherry and south Andhra Pradesh coasts till 27th morning. Thereafter, it is likely to increase becoming 55-65 kmph gusting to 75 kmph from 27th evening till 30th November morning.

(iii) Sea condition:

- Rough to very Rough Sea condition is very likely to prevail over southwest Bay of Bengal and along & off Sri Lanka coast till 27th morning. It is likely to become high from 27th evening till 29th November and improve thereafter becoming very rough to rough on 30th November.
- Rough to very rough Sea condition is very likely to prevail along and off Tamil Nadu- Puducherry and south Andhra Pradesh coasts till 30th November.
- Rough to very Rough Sea condition is likely to prevail over adjoining westcentral Bay of Bengal from 27th evening till 30th November.

(iv) Fisherman warning:

- Fishermen are advised not venture into
 - southwest Bay of Bengal and along & off Sri Lanka & Tamilnadu coasts till 30th November, 2024.
 - Adjoining areas of Westcentral Bay of Bengal and along & off south Andhra Pradesh coast during 27th to 30th November 2024.
- Fishermen out at sea are advised to return to coasts immediately.

(v) Impact Expected [over Tamil Nadu – Puducherry and south Andhra Pradesh]

- Localized Flooding of roads, water logging in low lying areas and closure of underpasses mainly in urban areas of the above region.
- Occasional reduction in visibility due to heavy rainfall.

Contact: Cyclone Warning Division, Office of the Director General of Meteorology, India Meteorological Department, Ministry of Earth Sciences, E-mail: cyclonewarningdivision@gmail.com, Website: rsmcnewdelhi.imd.gov.in, Spatial rainfall distribution: Isolated: <25%, A few: 26-50%, Many: 51-75%, Most: 76-100%, Rainfall amount (mm): Heavy rain: 64.5 – 115.5, Very heavy rain: 115.6 – 204.4, Extremely heavy rain: 204.5 or more.

- Disruption of traffic in major cities due to water logging in roads leading to increased travel time.
- Minor damage to kutchra roads.
- Damage to horticulture and standing crops in some areas due to inundation.

(vi) Action Suggested

- Fishermen are advised not venture into
 - southwest Bay of Bengal and along & off Sri Lanka & Tamilnadu coasts till 30th November, 2024.
 - Adjoining areas of Westcentral Bay of Bengal and along & off south Andhra Pradesh coast during 27th to 30th November 2024.
- Fishermen out at sea are advised to return to coasts immediately
- Check for traffic congestion on your route before leaving for your destination.
- Follow any traffic advisories that are issued in this regard.
- Avoid going to areas that face the water logging problems often.
- Special care may be taken for fishing ponds and poultries over coastal areas.
- Avoid staying in vulnerable structure.

(vii) Agromet advisories [over Tamil Nadu – Puducherry and Andhra Pradesh]

- Provide adequate drainage facilities for the removal of excess water from rice, cotton, sugarcane, turmeric and vegetable fields, coconut and banana orchards. Provide mechanical support to banana plants to prevent lodging.
- Make arrangements to drain out excess water from the standing crop fields and fruit orchards in Kerala and Coastal Andhra Pradesh.
- Harvest the matured crops and keep it in safe place.
- Provide mechanical support to horticultural crops and staking to vegetables.

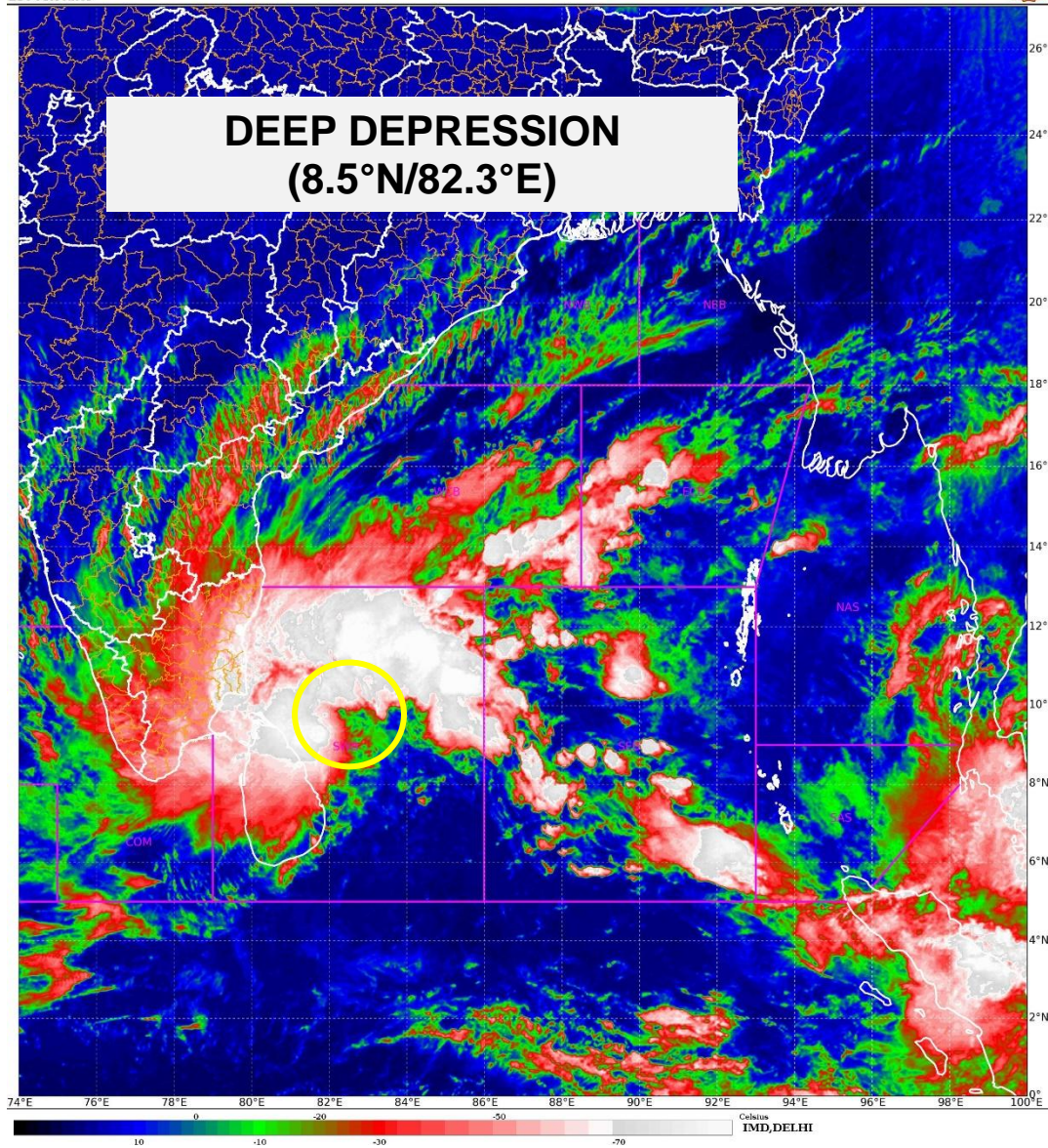
All associated graphics have been kept in Annexure-I. The 24 hours accumulated realised rainfall (≥ 7 cm) ending at 0830 hours IST of 27th November is kept in Annexure-II.

Next Press Release will be issued at 1430 hours IST of tomorrow, the 28th November, 2024.

Contact: Cyclone Warning Division, Office of the Director General of Meteorology, India Meteorological Department, Ministry of Earth Sciences, E-mail: cyclonewarningdivision@gmail.com, Website: rsmcnewdelhi.imd.gov.in, Spatial rainfall distribution: Isolated: <25%, A few: 26-50%, Many: 51-75%, Most: 76-100%, Rainfall amount (mm): Heavy rain: 64.5 – 115.5, Very heavy rain: 115.6 – 204.4, Extremely heavy rain: 204.5 or more.

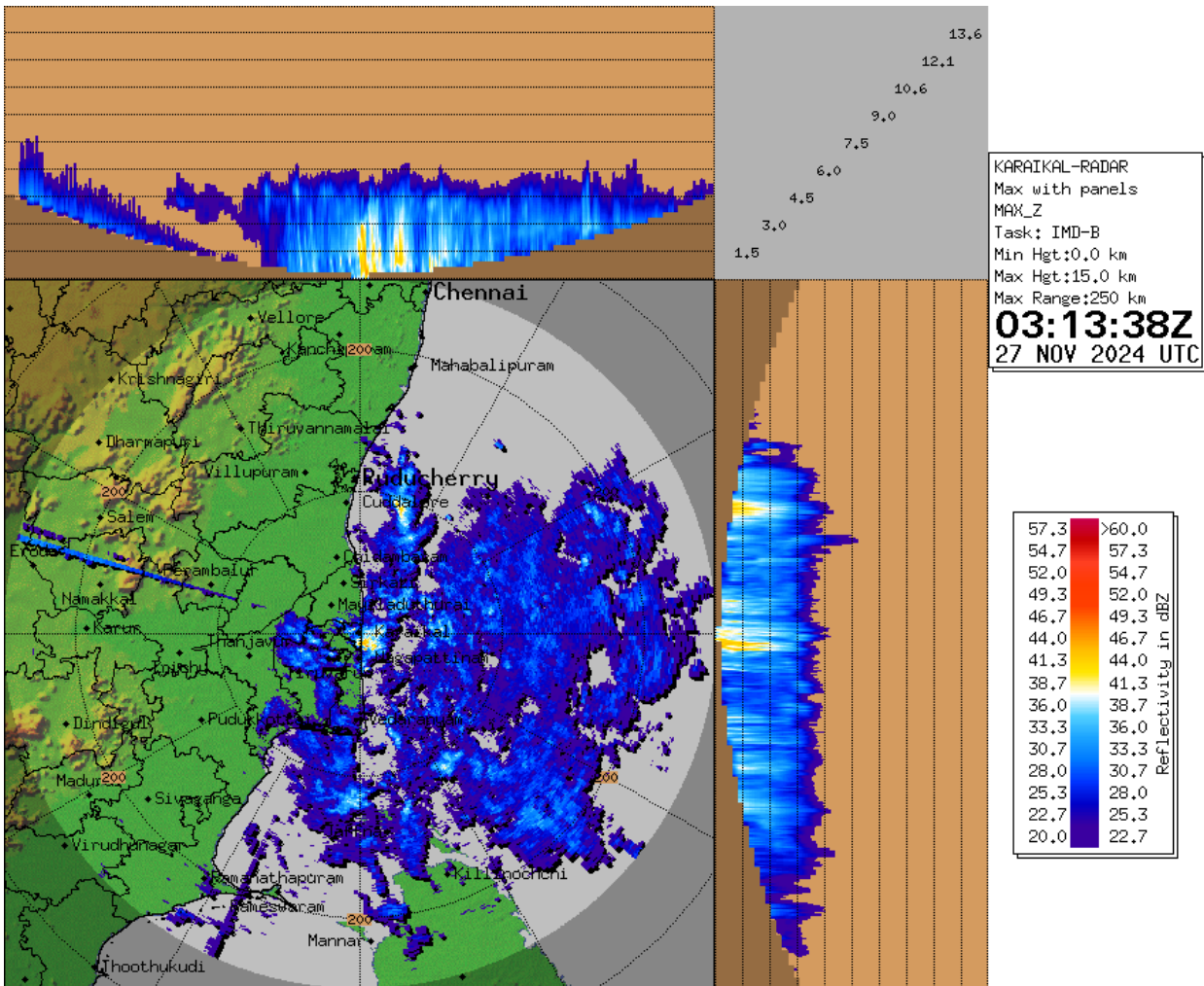
SAT : INSAT-3DR IMG
IMG_TIR1_TEMP 10.8 um
LIC Mercator

27-11-2024/(0215 to 0312) GMT
27-11-2024/(0815 to 0842) IST



Contact: Cyclone Warning Division, Office of the Director General of Meteorology, India Meteorological Department, Ministry of Earth Sciences, E-mail: cyclonewarningdivision@gmail.com, Website: rsmcnewdelhi.imd.gov.in, Spatial rainfall distribution: Isolated: <25%, A few: 26-50%, Many: 51-75%, Most: 76-100%, Rainfall amount (mm): Heavy rain: 64.5 – 115.5, Very heavy rain: 115.6 – 204.4, Extremely heavy rain: 204.5 or more.

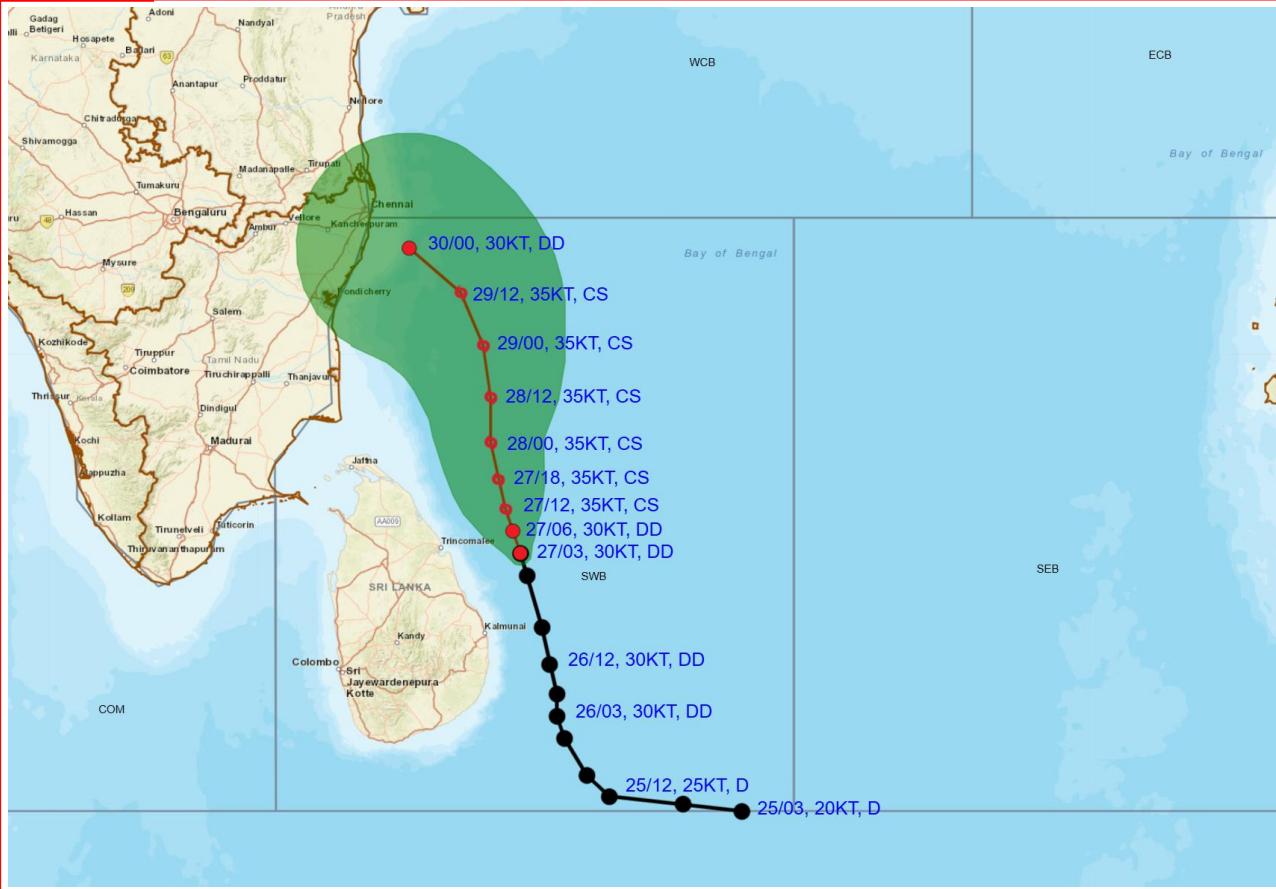
Doppler Weather Radar Observation (Max Z) at Karaikal



Contact: Cyclone Warning Division, Office of the Director General of Meteorology, India Meteorological Department, Ministry of Earth Sciences, E-mail:cyclonewarningdivision@gmail.com, Website: rsmcnewdelhi.imd.gov.in, Spatial rainfall distribution: Isolated: <25%, A few: 26-50%, Many: 51-75%, Most: 76-100%, Rainfall amount (mm): Heavy rain: 64.5 – 115.5, Very heavy rain: 115.6 – 204.4, Extremely heavy rain: 204.5 or more.



OBSERVED AND FORECAST TRACK ALONG WITH CONE OF UNCERTAINTY OF DEEP DEPRESSION OVER SOUTHWEST BAY OF BENGAL BASED ON 0300 UTC (0830 HRS. IST) OF 27TH NOVEMBER, 2024



DATE/TIME : IN UTC
 IST : UTC + 0530
 KT : NAUTICAL MILE S/HOUR = 1.85 KM/HOUR
 LPA : LOW PRESSURE AREA
 WML : WELL MARKED LOW PRESSURE AREA
 D : DEPRESSION (17-27 KT)
 DD : DEEP DEPRESSION (28-33 KT)
 CS : CYCLONIC STORM (34-47 KT)
 SCS : SEVERE CYCLONIC STORM (48-63 KT)
 VSCS : VERY SEVERE CYCLONIC STORM (64-89 KT)
 ESCS : EXTREMELY SEVERE CYCLONIC STORM (90-119 KT)
 SuCS : SUPER CYCLONIC STORM (≥ 120 KT)

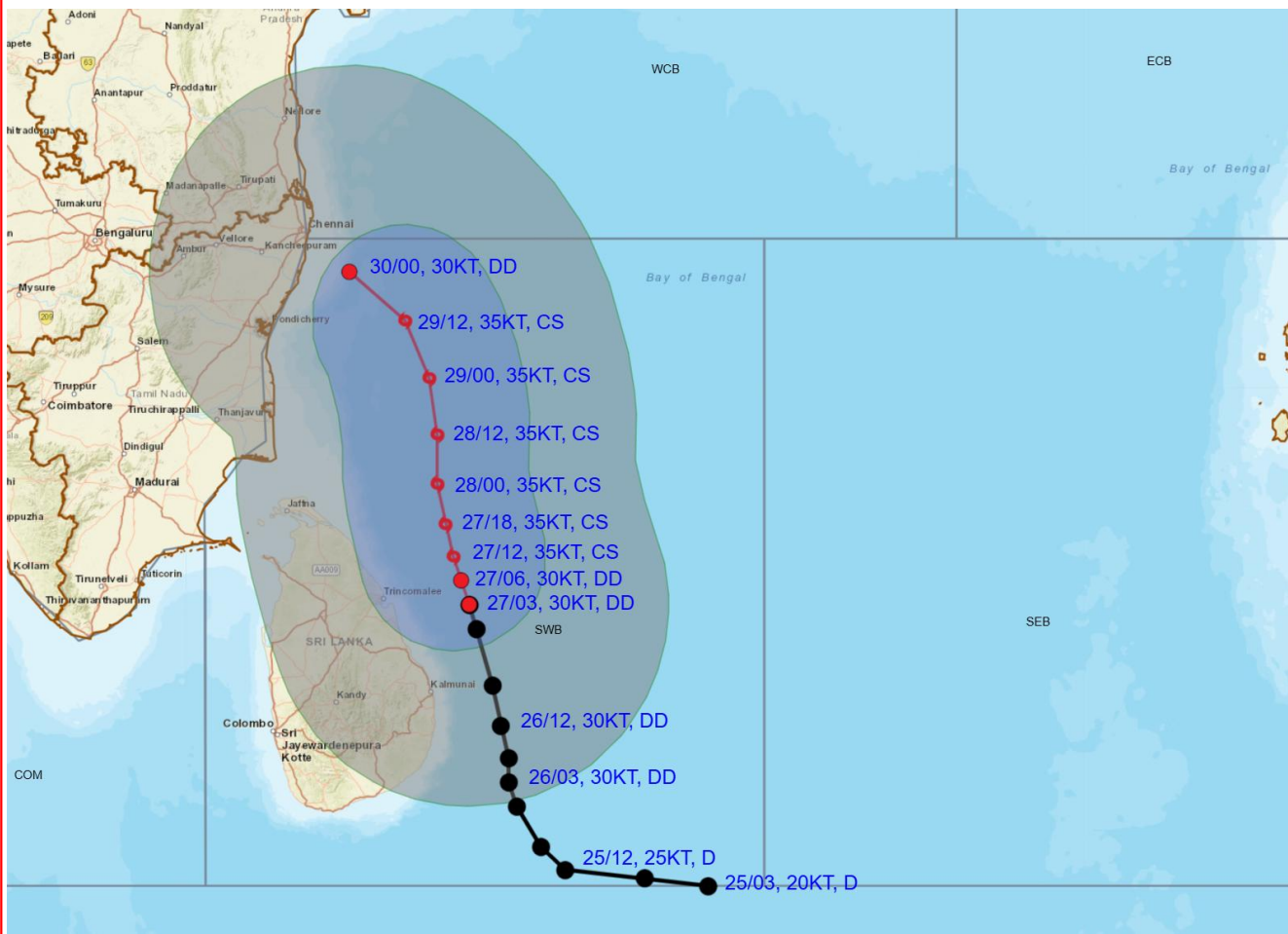
● LESS THAN 34 KT
 ○ 34-47 KT
 ○ ≥ 48 KT
 — OBSERVED TRACK
 — FORECAST TRACK
 ▲ CONE OF UNCERTAINTY

Forecast	DISTANCE (KM) AND DIRECTION FROM STATIONS				
	BATTICALOA	TRINCOMALEE	NAGAPPATTINAM	PUDUCHERRY	CHENNAI/MINAMBAKKAM
27.11.24/0300	110, NE	120, E	370, SE	470, SE	550, SSE
28.11.24/0000	260, N	170, NNE	240, ESE	320, SE	380, SSE
29.11.24/0000	400, N	310, N	220, ENE	230, ESE	260, SE
30.11.24/0000	550, N	450, N	230, NNE	130, ENE	80, ESE

Contact: Cyclone Warning Division, Office of the Director General of Meteorology, India Meteorological Department, Ministry of Earth Sciences, E-mail: cyclonewarningdivision@gmail.com, Website: rsmcnewdelhi.imd.gov.in, Spatial rainfall distribution: Isolated: <25%, A few: 26-50%, Many: 51-75%, Most: 76-100%, Rainfall amount (mm): Heavy rain: 64.5 – 115.5, Very heavy rain: 115.6 – 204.4, Extremely heavy rain: 204.5 or more.



OBSERVED AND FORECAST TRACK ALONGWITH QUADRANT WIND DISTRIBUTION OF DEEP DEPRESSION OVER SOUTHWEST BAY OF BENGAL BASED ON 0300 UTC (0830 HRS. IST) OF 27TH NOVEMBER, 2024.



- DATE/TIME : IN UTC
 IST : UTC + 0530
 KT : NAUTICAL MILE S/HOUR = 1.85 KM/HOUR
 LPA : LOW PRESSURE AREA
 WML : WELL MARKED LOW PRESSURE AREA
 D : DEPRESSION (17-27 KT)
 DD : DEEP DEPRESSION (28-33 KT)
 CS : CYCLONIC STORM (34-47 KT)
 SCS : SEVERE CYCLONIC STORM (48-63 KT)
 VSCS : VERY SEVERE CYCLONIC STORM (64-89 KT)
 ESCS : EXTREMELY SEVERE CYCLONIC STORM (90-119 KT)
 SuCS : SUPER CYCLONIC STORM (≥ 120 KT)

- LESS THAN 34 KT
 - 34-47 KT
 - ≥ 48 KT
 - OBSERVED TRACK
 - FORECAST TRACK
 - CONE OF UNCERTAINTY
- AREA OF MAXIMUM SUSTAINED WIND SPEED:
- 28-33 KT (52-61 KMPH)
 - 34-49 KT (62-91 KMPH)
 - 50-63 KT (92-117 KMPH)
 - ≥ 64 KT (≥ 118 KMPH)

IMPACT OVER THE SEA

MSW (knot/kmph)	Impact	Action
28-33 (52-61)	Very rough seas	Total suspension of fishing operations
34-49 (62-91)	High to very high seas	Total suspension of fishing operations
50-63 (92-117)	Very high seas	Total suspension of fishing operations
≥ 64 (≥ 118)	Phenomenal	Total suspension of fishing operations

Contact: Cyclone Warning Division, Office of the Director General of Meteorology, India Meteorological Department, Ministry of Earth Sciences, E-mail: cyclonewarningdivision@gmail.com, Website: rsmcnewdelhi.imd.gov.in, Spatial rainfall distribution: Isolated: <25%, A few: 26-50%, Many: 51-75%, Most: 76-100%, Rainfall amount (mm): Heavy rain: 64.5 – 115.5, Very heavy rain: 115.6 – 204.4, Extremely heavy rain: 204.5 or more.

Flash Flood Guidance

24 hours Outlook for the Flash Flood

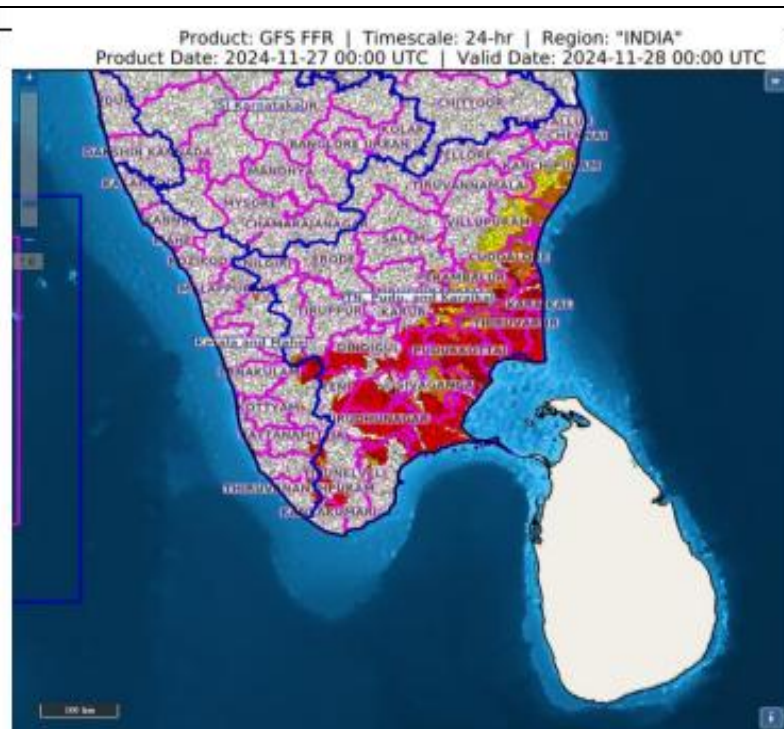
Risk (FFR) till 0530 IST of 28-11-2024:

High flash flood risk likely over few watersheds & neighbourhoods of following Met Sub-divisions during next 24 hours

Tamil Nadu - Puducherry & Karaikal -

Karaikal, Puduchery, Ariyalur, Cuddalore, Dindigul, Kanchipuram, Kanyakumari, Karur, Madurai, Nagapattinam, Nilgiri, Perambalur, Salem, Sivaganga, Teni, Thiruvapur, Tirunelveli, Tiruvallur, Tuticorin, Villupuram and Virudhunagar districts.

Surface runoff/ Inundation may occur at some fully saturated soils & low-lying areas over area of concern as shown in map due to expected rainfall occurrence in next 24 hours.



Flash Flood Risk



High Risk (Take Action)



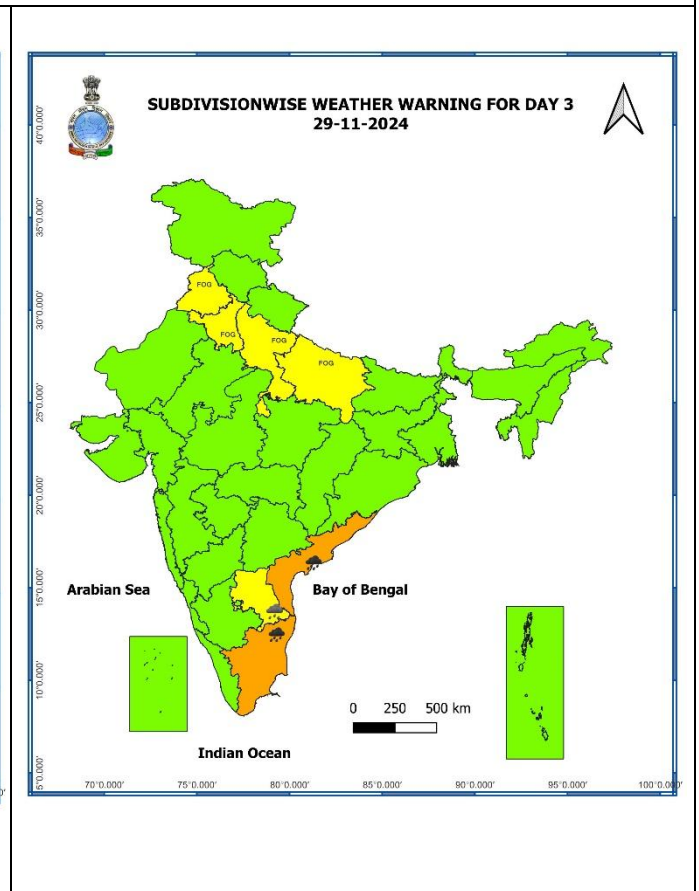
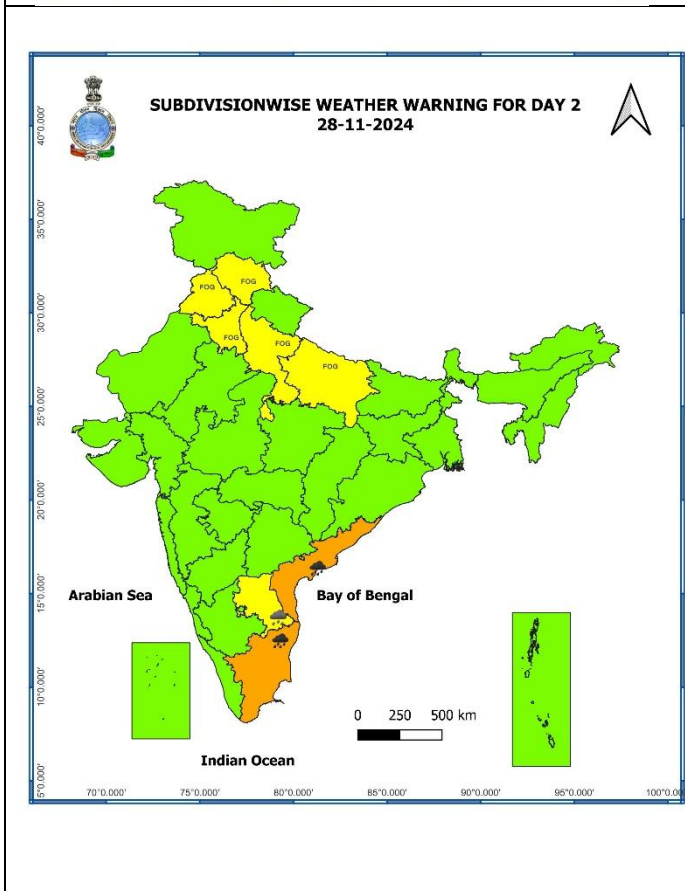
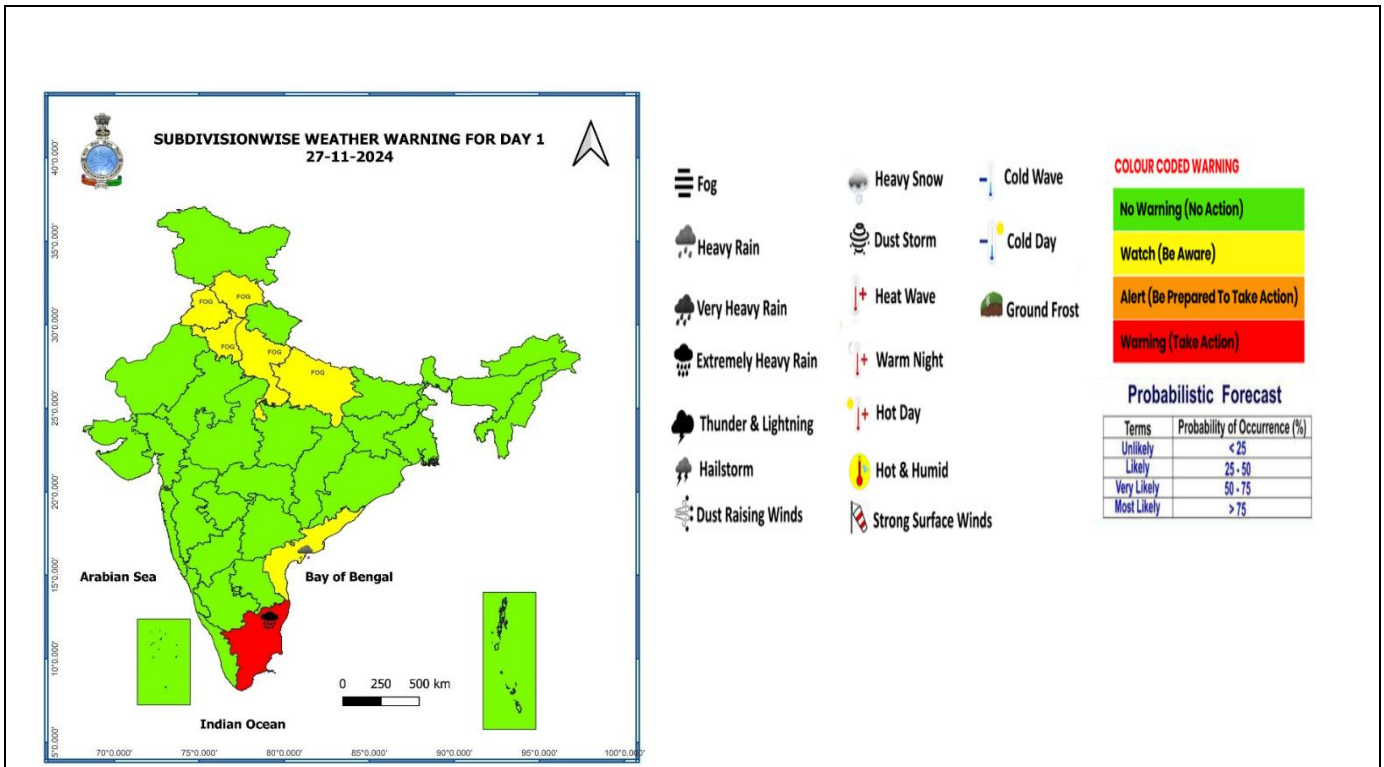
Moderate Risk (Be Prepared)



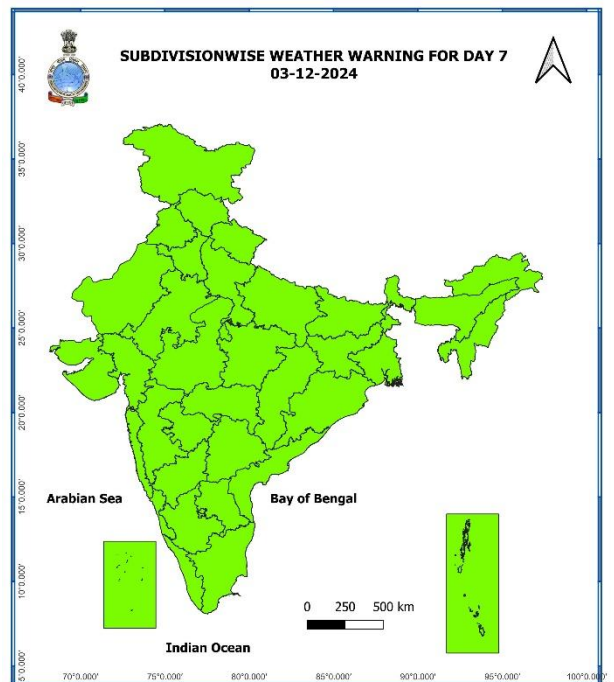
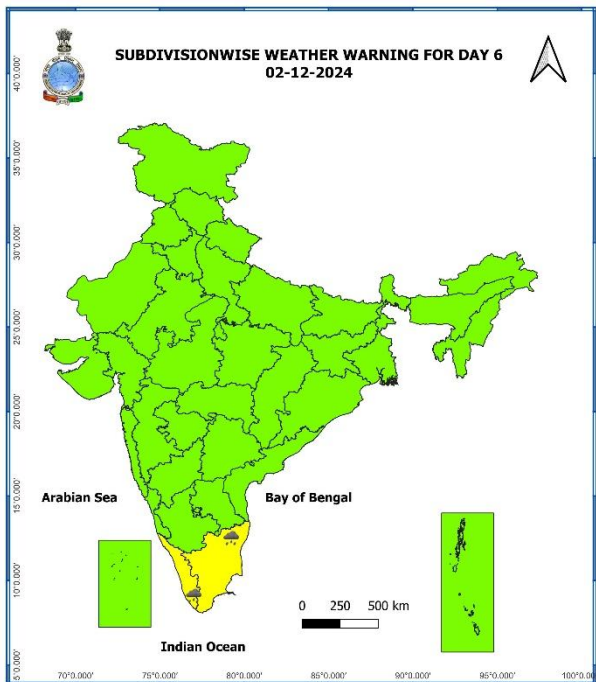
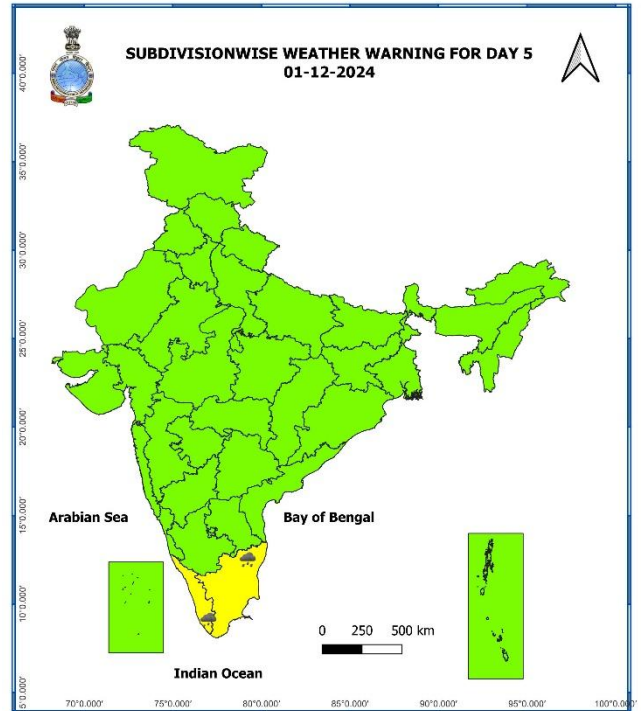
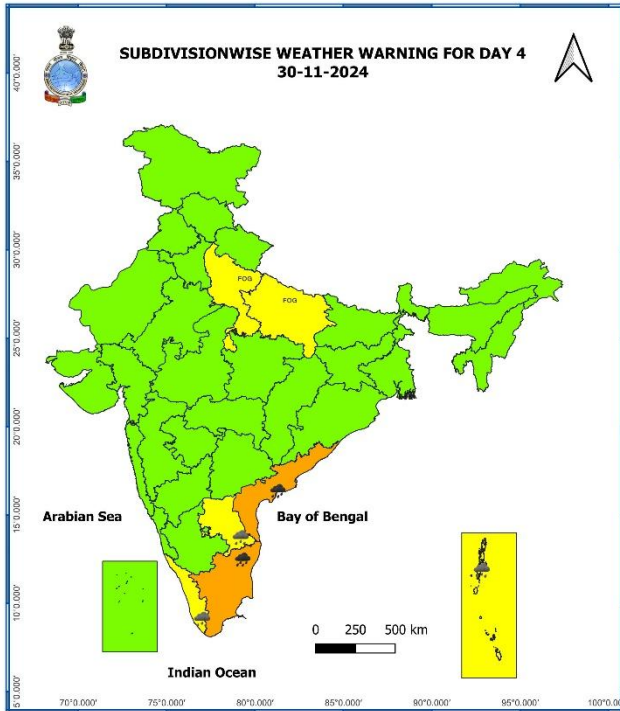
Low Risk (Be Updated)

Contact: Cyclone Warning Division, Office of the Director General of Meteorology, India Meteorological Department, Ministry of Earth Sciences, E-mail: cyclonewarningdivision@gmail.com, Website: rsmcnewdelhi.imd.gov.in, Spatial rainfall distribution: Isolated: <25%, A few: 26-50%, Many: 51-75%, Most: 76-100%, Rainfall amount (mm): Heavy rain: 64.5 – 115.5, Very heavy rain: 115.6 – 204.4, Extremely heavy rain: 204.5 or more.

Weather Warning Graphics



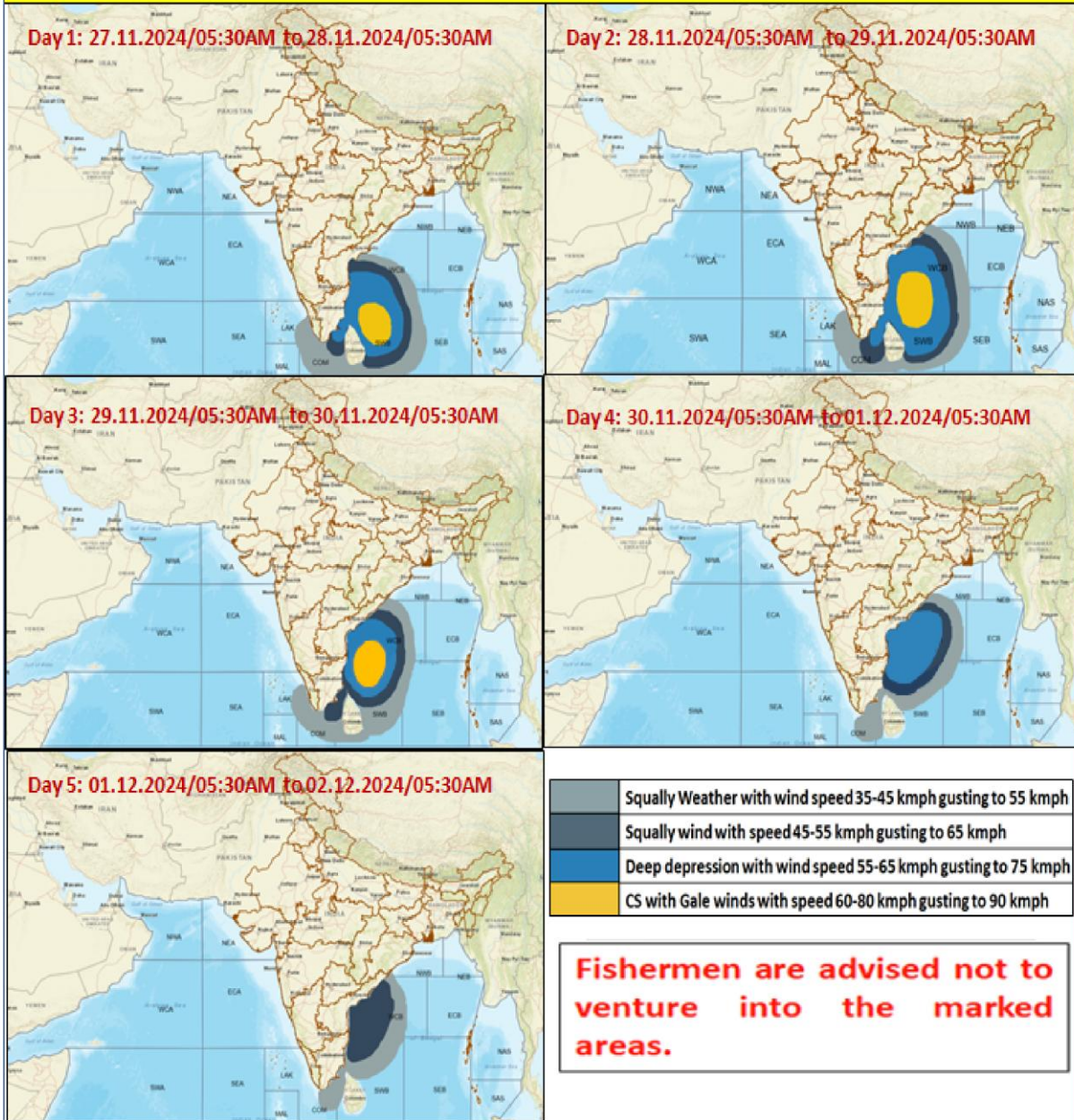
Contact: Cyclone Warning Division, Office of the Director General of Meteorology, India Meteorological Department, Ministry of Earth Sciences, E-mail: cyclonewarningdivision@gmail.com, Website: rsmcnewdelhi.imd.gov.in, Spatial rainfall distribution: Isolated: <25%, A few: 26-50%, Many: 51-75%, Most: 76-100%, Rainfall amount (mm): Heavy rain: 64.5 – 115.5, Very heavy rain: 115.6 – 204.4, Extremely heavy rain: 204.5 or more.



- Action may be taken based on **ORANGE AND RED** COLOUR warnings.
- Vulnerable regions likely urban and hilly areas action may be initiated for heavy rainfall warning.
- As the lead period increases forecast accuracy decreases.

Contact: Cyclone Warning Division, Office of the Director General of Meteorology, India Meteorological Department, Ministry of Earth Sciences, E-mail:cyclonewarningdivision@gmail.com, Website: rsmcnewdelhi.imd.gov.in, Spatial rainfall distribution: Isolated: <25%, A few: 26-50%, Many: 51-75%, Most: 76-100%, Rainfall amount (mm): Heavy rain: 64.5 – 115.5, Very heavy rain: 115.6 – 204.4, Extremely heavy rain: 204.5 or more.

Fishermen Warning Graphics



Contact: Cyclone Warning Division, Office of the Director General of Meteorology, India Meteorological Department, Ministry of Earth Sciences, E-mail: cyclonewarningdivision@gmail.com, Website: rsmcnewdelhi.imd.gov.in, Spatial rainfall distribution: Isolated: <25%, A few: 26-50%, Many: 51-75%, Most: 76-100%, Rainfall amount (mm): Heavy rain: 64.5 – 115.5, Very heavy rain: 115.6 – 204.4, Extremely heavy rain: 204.5 or more.

Significant Rainfall recorded during past 24 hours till 0830 hours IST of today 27.11.2024 (in cm):

❖ **Tamil Nadu, Puducherry & Karaikal:** Nagapattinam (Nagapattinam) 19, Kodiayakarai (Nagapattinam), Nagapattinam (Nagapattinam), Velankanni (Nagapattinam) 18 each, Tirupoondi (Nagapattinam) 14, Manali (Chennai), Thirukuvalai (Nagapattinam) 13 each, Tiruvarur (Thiruvarur), Vedaranyam (Nagapattinam) 12 each, Mahabalipuram (Chengalpattu), Cheyyur (Chengalpattu), Thalaignayer (Nagapattinam), Sirkali (Mayiladuthurai), Kathivakkam (Chennai), Marakkanam (Villupuram), Vadakuthu (Cuddalore), Mahabalipuram (Chengalpattu), Tarangambadi (Mayiladuthurai) 11 each, Mayiladuthurai (Mayiladuthurai), Thiruthuraiipoondi (Thiruvarur), Kollidam (Mayiladuthurai), Tiruvarur (Thiruvarur), Cuddalore Collector Office (Cuddalore), Cuddalore (Cuddalore), Karaikal (Karaikal), Nannilam (Thiruvarur) 10 each, Muthupet (Thiruvarur), Mannudi (Thiruvarur), Ayyampettai (Thanjavur), Needamangalam (Thiruvarur), Karaikal (Karaikal), Madukkur (Thanjavur), NIOT_Pallikaranai (Chennai) 9 each, Bahour (Puducherry), Manalmedu (Mayiladuthurai), Nctpl M ECR (Chengalpattu), Mayiladuthurai (Mayiladuthurai), Manalmedu (Mayiladuthurai), Adiramapattinam (Thanjavur), Ayinkudi (Pudukkottai), Red Hills (Tiruvallur), Pattukottai (Thanjavur), Mylam (Villupuram), Thirukalukundram (Chengalpattu), Puducherry (Puducherry), Vettikadu (Thanjavur), Ennore (Tiruvallur), Orthanad (Thanjavur), Annamalai Nagar (Cuddalore), Puducherry Town (Puducherry) 8 each, Chidambaram (Cuddalore), Puducherry (Puducherry), Puzhal (Chennai), Kodavasal (Thiruvarur), Valangaiman (Thiruvarur), Neivasal Thenpathi (Thanjavur), Lower Anaicut (Thanjavur), Manjalaru (Thanjavur), Perungudi (Chennai), Taramani (Chennai), Puzhal (Tiruvallur), Nagudi (Pudukkottai), Madhavaram (Chennai), Thirukkanur (Puducherry), Thiruvottiyur (Chennai), Parangipettai (Cuddalore), Vanamadevi (Cuddalore), Royapuram (Chennai), Adyar Eco Park (Chennai), Adyar (Chennai), Vilupuram (Villupuram), Sholinganallur (Chennai), Peravurani (Thanjavur), Pandavaiyar Head (Thiruvarur), Avadi (Tiruvallur), Sembanarkoil (Mayiladuthurai) 7 each;

Contact: Cyclone Warning Division, Office of the Director General of Meteorology, India Meteorological Department, Ministry of Earth Sciences, E-mail: cyclonewarningdivision@gmail.com, Website: rsmcnewdelhi.imd.gov.in, Spatial rainfall distribution: Isolated: <25%, A few: 26-50%, Many: 51-75%, Most: 76-100%, Rainfall amount (mm): Heavy rain: 64.5 – 115.5, Very heavy rain: 115.6 – 204.4, Extremely heavy rain: 204.5 or more.